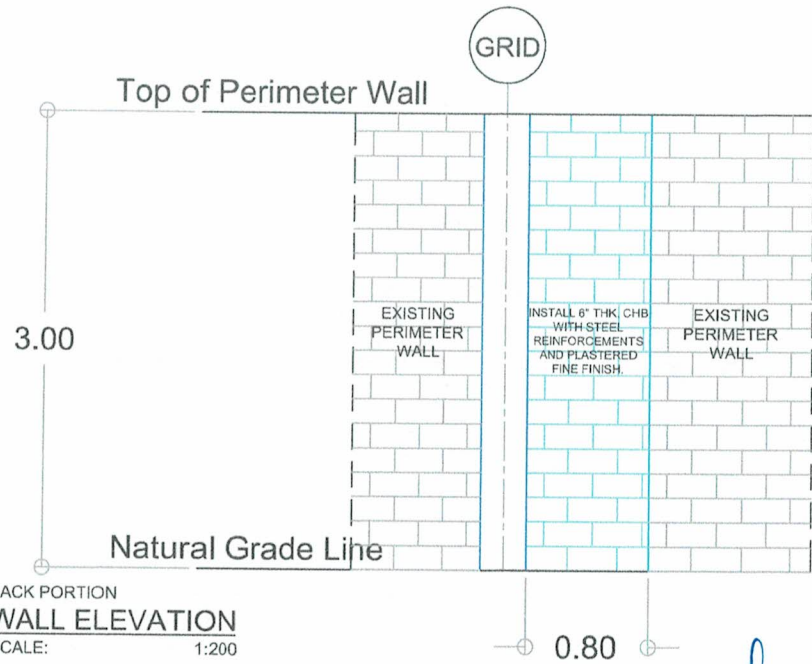




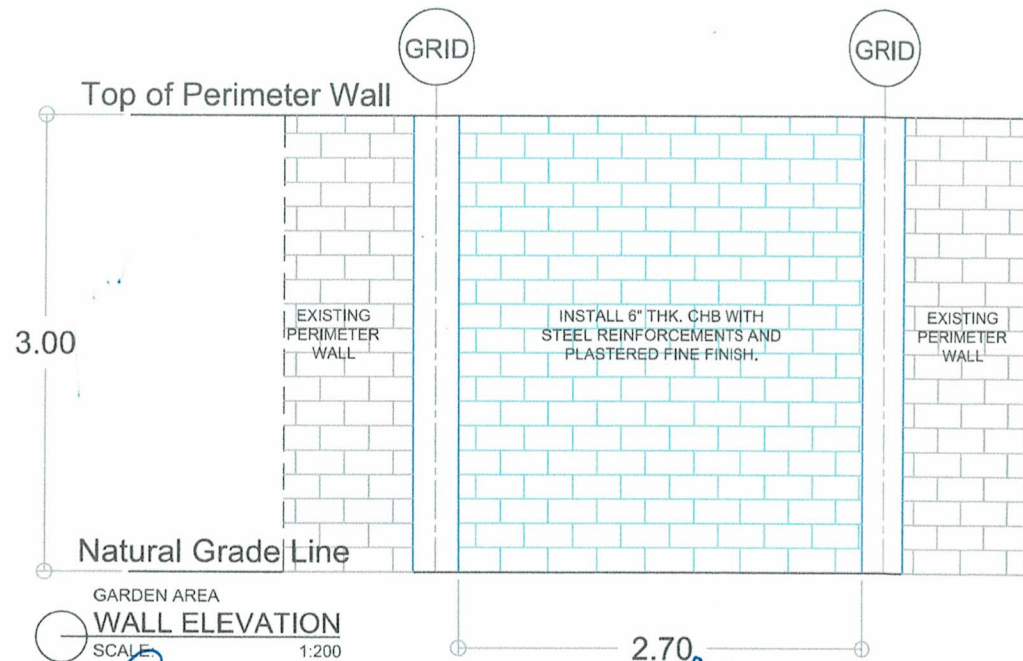
BACK PORTION  
 ACTUAL PHOTO  
 NOT TO SCALE



GARDEN AREA  
 ACTUAL PHOTO  
 NOT TO SCALE



BACK PORTION  
 WALL ELEVATION  
 SCALE: 1:200



GARDEN AREA  
 WALL ELEVATION  
 SCALE: 1:200



REPUBLIC OF THE PHILIPPINES  
 DEPARTMENT OF INTERIOR AND LOCAL GOVERNMENT  
 BUREAU OF JAIL MANAGEMENT AND PENOLOGY  
 UPPER DOONGAN, BUTUAN CITY

PROJECT TITLE:	DRAFTED BY:	PREPARED / DESIGNED BY:	RECOMMENDING APPROVAL:	APPROVED BY:	SHEET CONTENT:	SHEET NO.:
REPAIR/IMPROVEMENT OF PERIMETER FENCE	Gerald C. Baloyos JO2 Logistics Staff JMP	MARICAR C. GONZALES JSINSP (RCE) Regional Engineer JMP	ROMA JIN DC SUMAGUIO JSINSP Chief, Logistics Division JMP	MARIA IRENE A. ESQUINAS Jail Chief Superintendent Regional Director of the Bureau DSC	AS SHOWN	A - 2 2   2
PROJECT ADDRESS: Surigao del Norte District Jail, Capitol Compound, Surigao City						

**TECHNICAL DESCRIPTION**

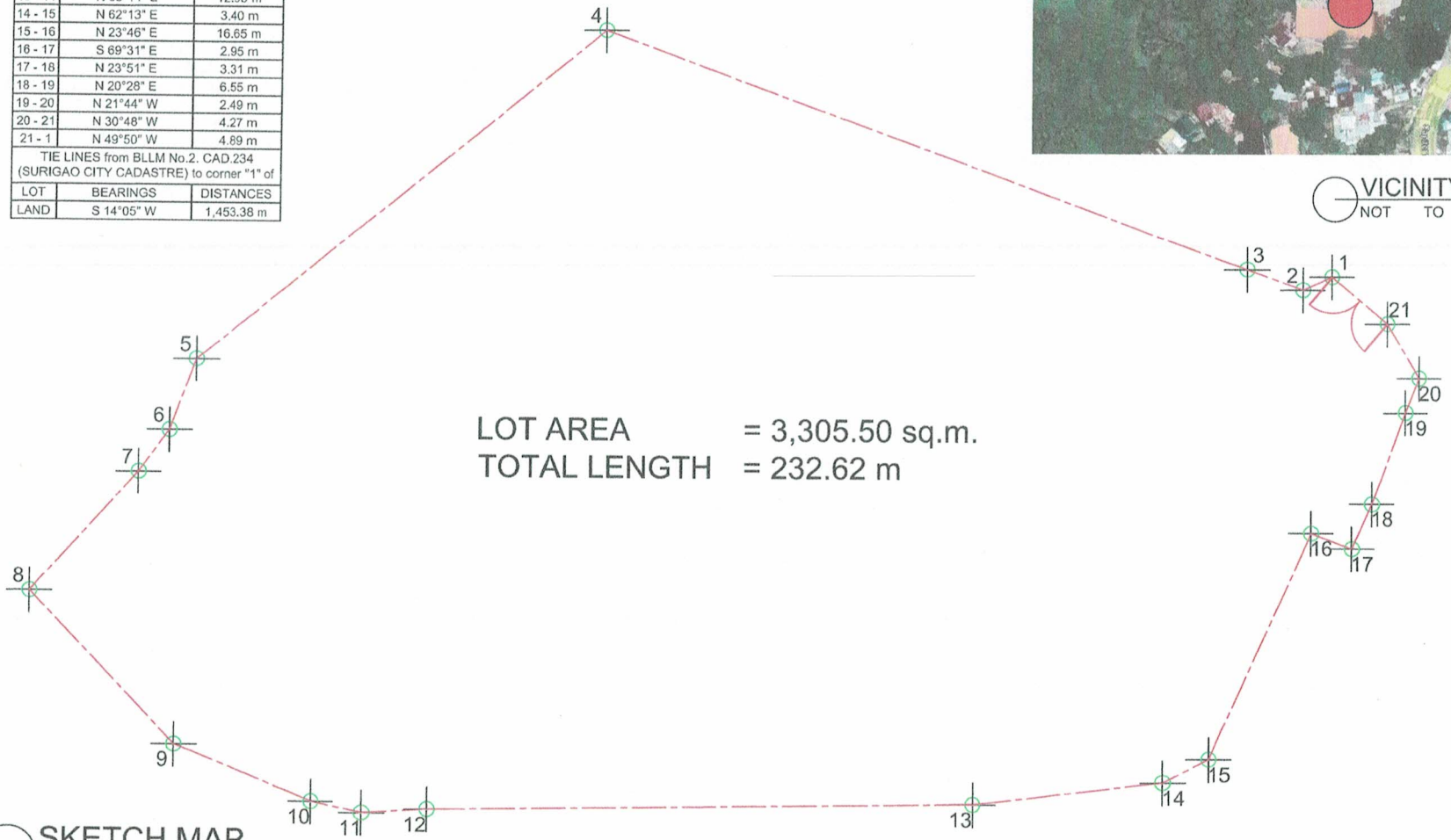
LOT NO.		
LINES	BEARINGS	DISTANCES
1-2	S 65°26' W	2.16 m
2-3	N 69°27' W	3.94 m
3-4	N 69°50' W	46.08 m
4-5	S 50°42' W	35.24 m
5-6	S 19°47' W	5.07 m
6-7	S 36°00' W	3.49 m
7-8	S 41°26' W	10.77 m
8-9	S 43°24' E	14.15 m
9-10	S 67°38' E	9.94 m
10-11	S 78°02' E	3.51 m
11-12	N 86°30' E	4.34 m
12-13	N 89°11' E	36.45 m
13-14	N 83°14' E	12.95 m
14-15	N 62°13' E	3.40 m
15-16	N 23°46' E	16.65 m
16-17	S 69°31' E	2.95 m
17-18	N 23°51' E	3.31 m
18-19	N 20°28' E	6.55 m
19-20	N 21°44' W	2.49 m
20-21	N 30°48' W	4.27 m
21-1	N 49°50' W	4.89 m

TIE LINES from BLLM No.2, CAD.234 (SURIGAO CITY CADASTRE) to corner "11" of

LOT	BEARINGS	DISTANCES
LAND	S 14°05' W	1,453.38 m



VICINITY MAP  
NOT TO SCALE



SKETCH MAP  
SCALE 1:300



REPUBLIC OF THE PHILIPPINES  
DEPARTMENT OF INTERIOR AND LOCAL GOVERNMENT  
BUREAU OF JAIL MANAGEMENT AND PENOLOGY  
UPPER DOONGAN, BUTUAN CITY

PROJECT TITLE: <b>REPAIR/IMPROVEMENT OF PERIMETER FENCE</b>	DRAFTED BY: <i>Gerald G Baloyos</i> JO2 JMP Logistics Staff	PREPARED / DESIGNED BY: <i>MARICAR C GONZALES</i> JSINSP (RCE) JMP Regional Engineer	RECOMMENDING APPROVAL: <i>ROMA JIN DC SUMAGUIO</i> JSINSP JMP Chief, Logistics Division	APPROVED BY: <i>MARIA IRENE A ESQUINAS</i> Jail Chief Superintendent DSC Regional Director of the Bureau	SHEET CONTENT: AS SHOWN	SHEET NO.: A - 1 1 2
--	--	---	--	---	----------------------------	----------------------------