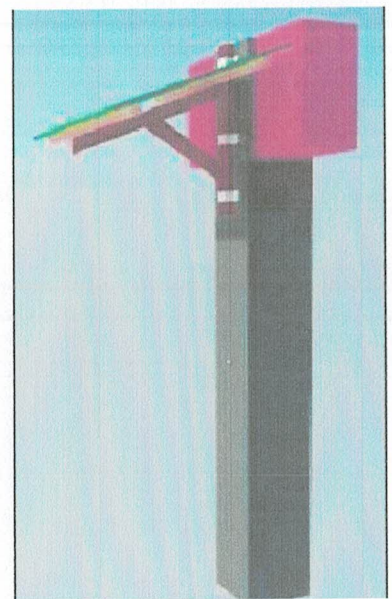


VICINITY MAP
NOT TO SCALE



PERSPECTIVE

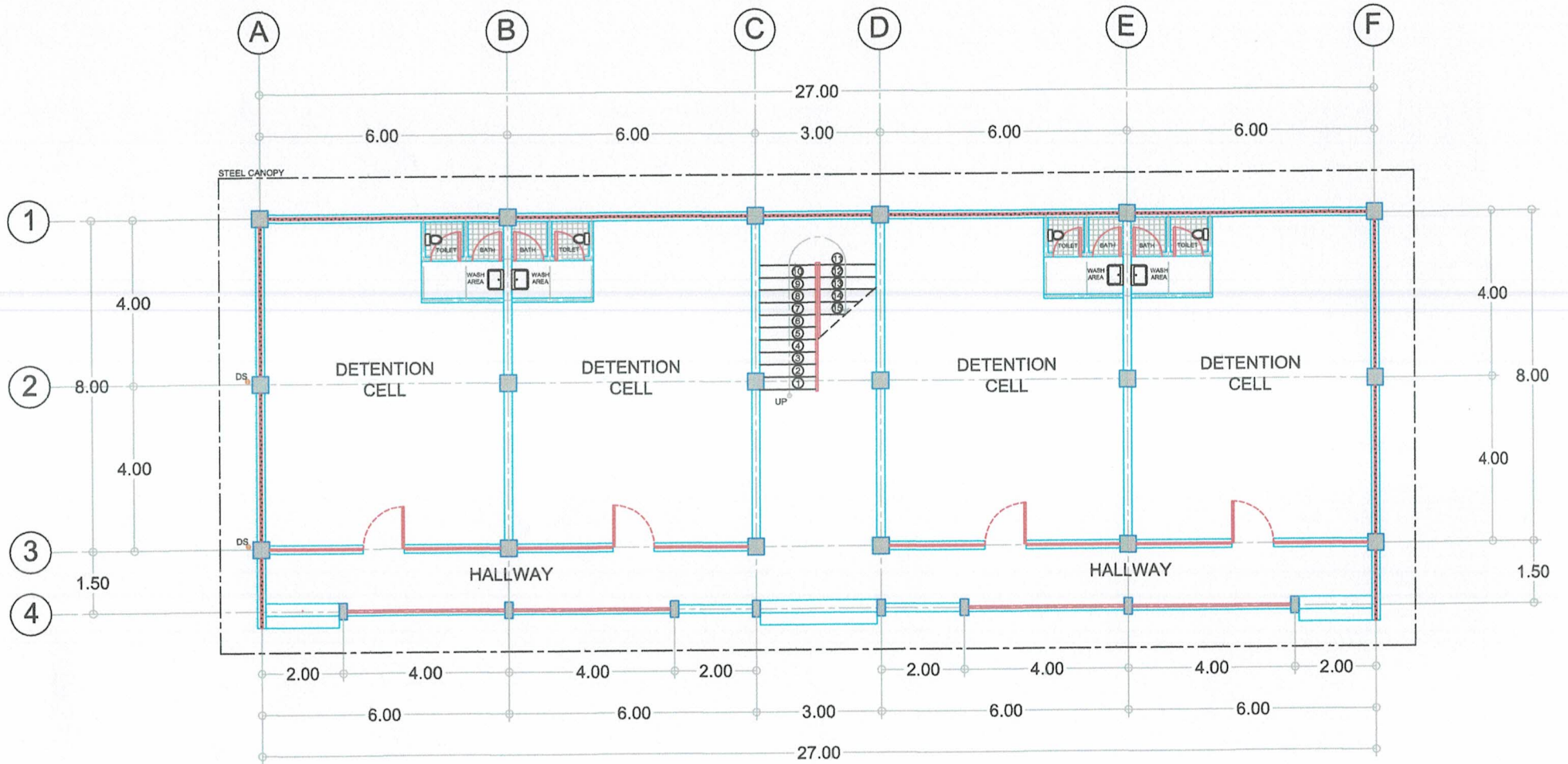
SURIGAO CITY JAIL
SITE DEVELOPMENT PLAN

SCALE: 1:200



REPUBLIC OF THE PHILIPPINES
DEPARTMENT OF INTERIOR AND LOCAL GOVERNMENT
BUREAU OF JAIL MANAGEMENT AND PENOLOGY
UPPER DOONGAN, BUTUAN CITY

PROJECT TITLE:	DRAFTED BY:	CHECKED BY:	RECOMMENDING APPROVAL:	APPROVED BY:	SHEET CONTENT:	SHEET NO.:
IMPROVEMENT OF FOUR (4) STOREY ACCOMMODATION BUILDING	Gerald C. Baloyos JO2 JMP Staff, Logistics Division	MARICAR C. GONZALES SINSP (RCE) JMP Regional Engineer	ROMA JIN DE SUMAGUIO SINSP JMP Chief, Logistics Division	MARIA IRENE A. ESQUINAS Jail Chief Superintendent Regional Director of the Jail Bureau	AS SHOWN	A - 1
PROJECT ADDRESS: Surigao City Jail, Bonifacio, Surigao City						1 5



GROUND FLOOR PLAN
SCALE 1:100



REPUBLIC OF THE PHILIPPINES
DEPARTMENT OF INTERIOR AND LOCAL GOVERNMENT
BUREAU OF JAIL MANAGEMENT AND PENOLOGY
UPPER DOONGAN, BUTUAN CITY

PROJECT TITLE:
**IMPROVEMENT OF FOUR (4) STOREY
ACCOMMODATION BUILDING**

PROJECT ADDRESS:
Surigao City Jail, Bonifacio, Surigao City

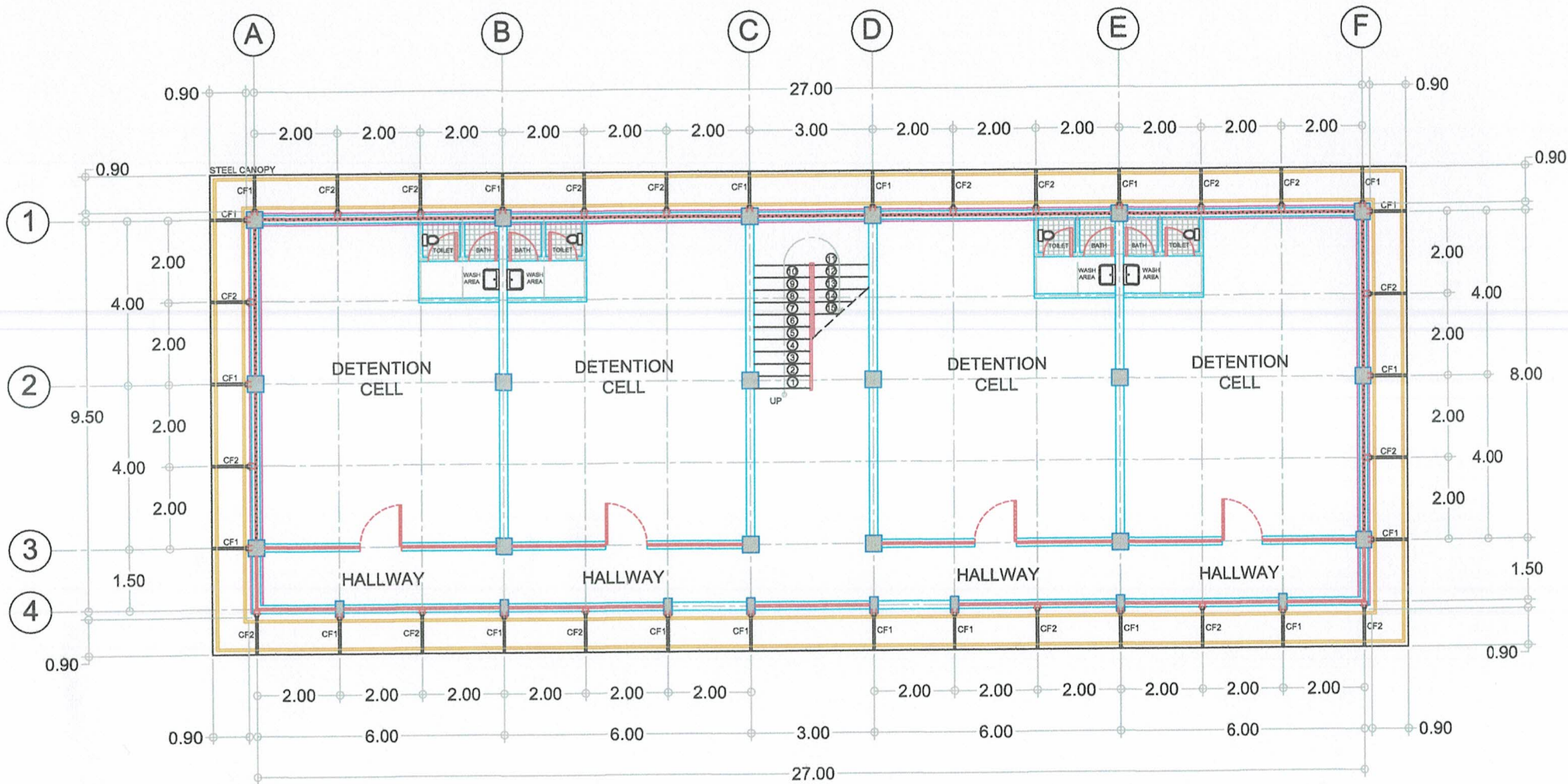
DRAFTED BY:
[Signature]
Gerald G. Baloyos
JO2 JMP
Staff, Logistics Division

CHECKED BY:
[Signature]
MARICAR C. GONZALES
SINSP (RCE) JMP
Regional Engineer

RECOMMENDING APPROVAL:
[Signature]
ROMA JIN DE SUMAGUIO
SINSP JMP
Chief, Logistics Division

APPROVED BY:
[Signature]
MARIA IRENE A. ESQUINAS
Jail Chief Superintendent DSC
Regional Director of the Jail Bureau

SHEET CONTENT:	SHEET NO.:	
AS SHOWN	A - 2	
	2	5



SECOND TO FOURTH FLOOR
 TYPICAL CANOPY FRAMING PLAN
 SCALE 1:100



REPUBLIC OF THE PHILIPPINES
 DEPARTMENT OF INTERIOR AND LOCAL GOVERNMENT
 BUREAU OF JAIL MANAGEMENT AND PENOLOGY
 UPPER DOONGAN, BUTUAN CITY

PROJECT TITLE:
**IMPROVEMENT OF FOUR (4) STOREY
 ACCOMMODATION BUILDING**

PROJECT ADDRESS:
 Surigao City Jail, Bonifacio, Surigao City

DRAFTED BY:
Gerald G. Baloyos
 JO2 JMP
 Staff, Logistics Division

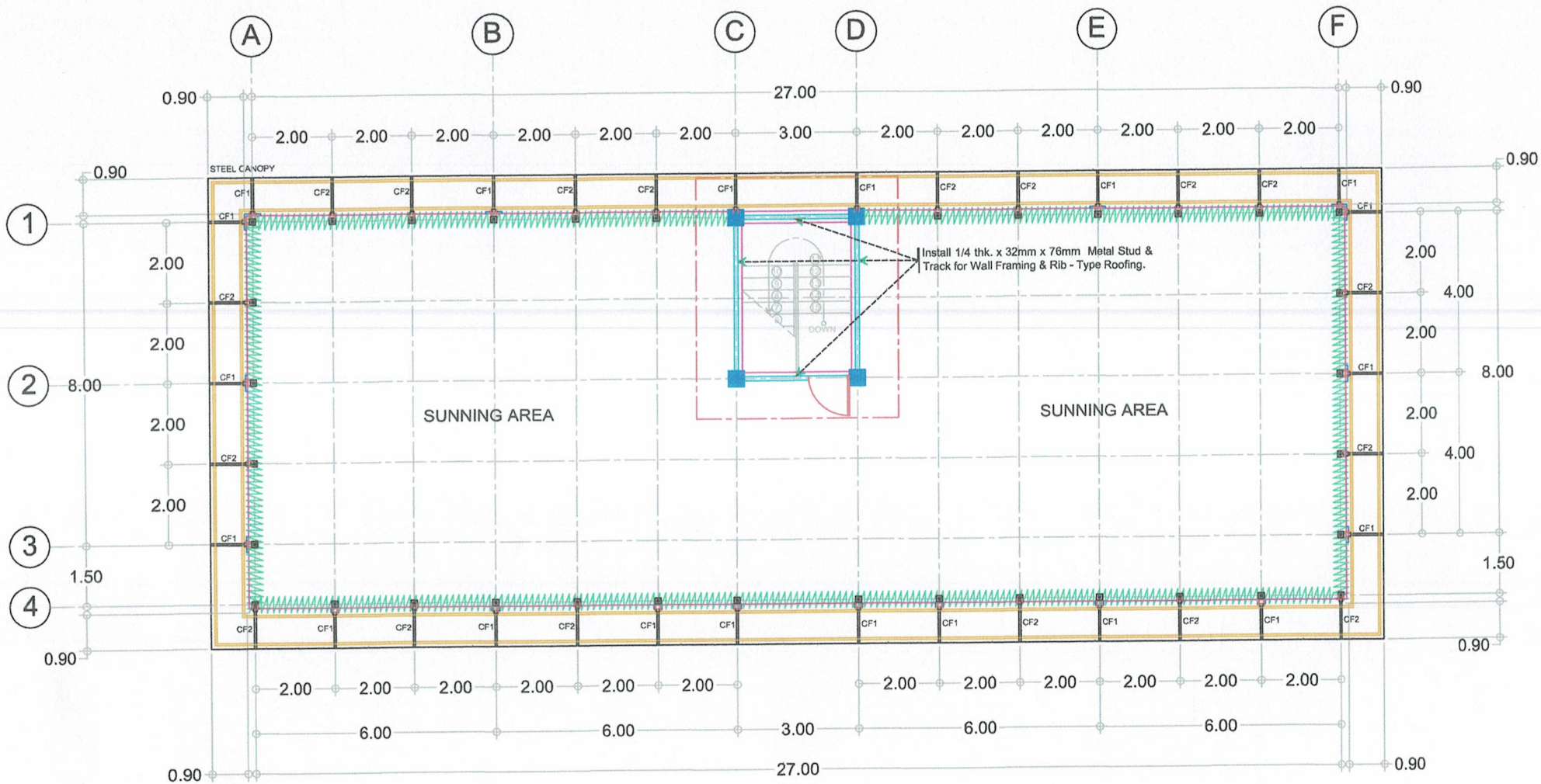
CHECKED BY:
Maricar C. Gonzales
 SINSIP (RCE) JMP
 Regional Engineer

RECOMMENDING APPROVAL:
Roma Jim de Sumaguido
 SINSIP JMP
 Chief, Logistics Division

APPROVED BY:
Maria Irene A. Esquinas
 Jail Chief Superintendent DSC
 Regional Director of the Jail Bureau

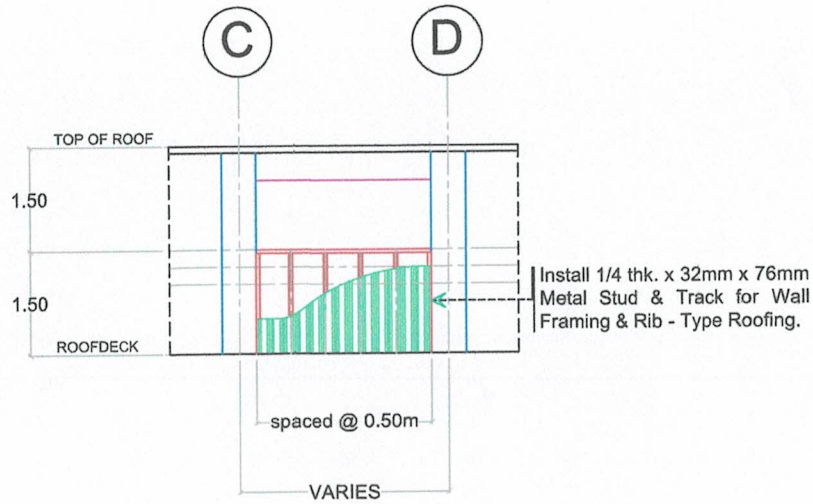
SHEET CONTENT:
 AS SHOWN

SHEET NO.:
 A - 3
 3 5

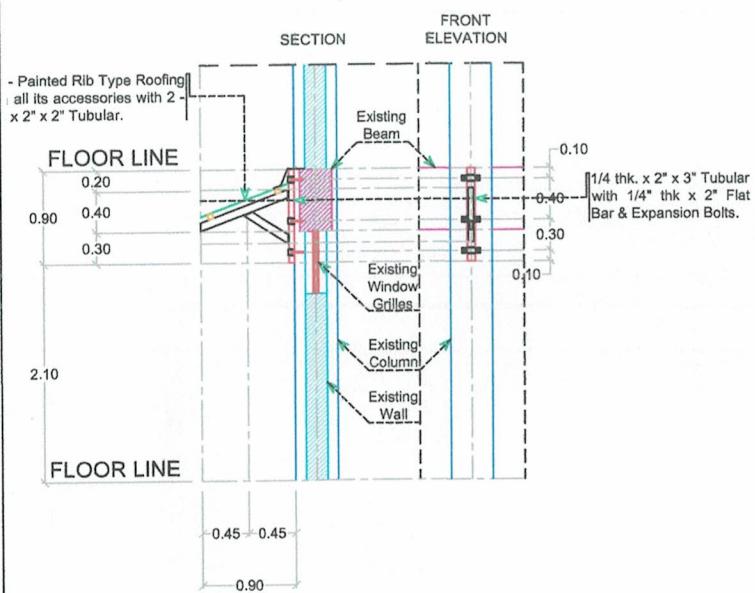


ROOFDECK
CANOPY FRAMING PLAN
SCALE 1:100

	PROJECT TITLE:	DRAFTED BY:	CHECKED BY:	RECOMMENDING APPROVAL:	APPROVED BY:	SHEET CONTENT:	SHEET NO.:
	IMPROVEMENT OF FOUR (4) STOREY ACCOMMODATION BUILDING	Gerard G. Baloyos JMP Staff, Logistics Division	MARICAR C. GONZALES SINSP (RCE) JMP Regional Engineer	ROMA JIN DO SIMAGUIO SINSP JMP Chief, Logistics Division	MARIA IRENE A. ESQUINAS Jail Chief Superintendent DSC Regional Director of the Jail Bureau	AS SHOWN	A - 4
	PROJECT ADDRESS: Surigao City Jail, Bonifacio, Surigao City						4 5



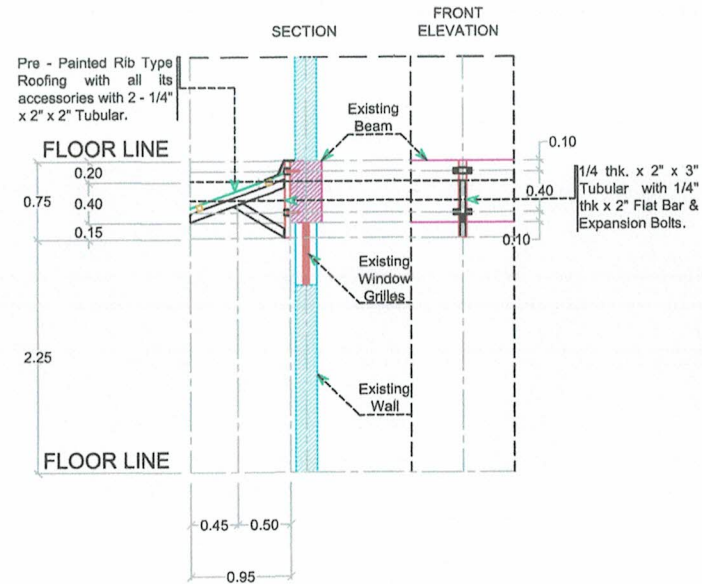
ROOFDECK
TYPICAL STEEL WALL DETAIL
 NOT TO SCALE



SECOND FLOOR TO ROOFDECK
TYPICAL CANOPY PLAN 1
 SCALE 1:50

SPECIFICATION & CONDITIONS:

1. 2" x 3" x 1/2" thk. Tubular for all metal canopy supports & framing. All connection must be fullwelded.
2. 3 - 2" x 1/2" thk x 12" long Flat Bar with 6 - 12mmØ x 0.12m long Expansion Bolts. And must be drilled to existing columns of the building.
3. Pre - Painted Rib -Type Roofing & other accessories. And 2 - 2" x 2" x 1/2" thk. Tubular for purlins.
4. All metal surface must be painted with metal primer and enamel paints.
5. All concrete surfaces that are affected by this work must be repaint with latex paint.



SECOND FLOOR TO ROOFDECK
TYPICAL CANOPY PLAN 2
 SCALE 1:50

SPECIFICATION & CONDITIONS:

1. 2" x 3" x 1/2" thk. Tubular for all metal canopy supports & framing. All connection must be fullwelded.
2. 2 - 2" x 1/2" thk x 12" long Flat Bar with 4 - 12mmØ x 0.12m long Expansion Bolts. And must be drilled to existing columns of the building.
3. Pre - Painted Rib -Type Roofing & other accessories. And 2 - 2" x 2" x 1/2" thk. Tubular for purlins.
4. All metal surface must be painted with metal primer and enamel paints.
5. All concrete surfaces that are affected by this work must be repaint with latex paint.



REPUBLIC OF THE PHILIPPINES
 DEPARTMENT OF INTERIOR AND LOCAL GOVERNMENT
 BUREAU OF JAIL MANAGEMENT AND PENOLOGY
 UPPER DOONGAN, BUTUAN CITY

PROJECT TITLE:	IMPROVEMENT OF FOUR (4) STOREY ACCOMMODATION BUILDING
PROJECT ADDRESS:	Surigao City Jail, Bonifacio, Surigao City

DRAFTED BY:	Gerald G Baloyos JMP Staff, Logistics Division
-------------	--

CHECKED BY:	MARICAR C GONZALES SINSP (RCE) JMP Regional Engineer
-------------	--

RECOMMENDING APPROVAL:	ROMA JIM DE SANTIAGO SINSP JMP Chief, Logistics Division
------------------------	--

APPROVED BY:	MARIA IRENE A ESQUINAS Jail Chief Superintendent DSC Regional Director of the Jail Bureau
--------------	---

SHEET CONTENT:	AS SHOWN
SHEET NO.:	S - 1
	5 5